



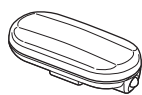
# TL-LD135-R TL-LD155-R

ENG



Copyright© 2012 CATEYE Co., Ltd. LD135R/155R-120507 1

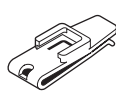
Before using the product, please thoroughly read this manual and keep it for future reference.



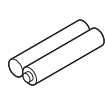
Light unit



FlexTight™ bracket (SP-11)

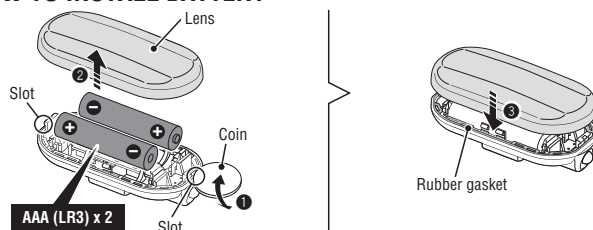


Clip (C-1N)



AAA dry-cell battery x 2

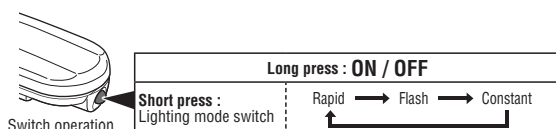
## 1 HOW TO INSTALL BATTERY



### CAUTION!

- Before your trip, please make sure the light is firmly mounted to the bracket, it lights up, and the light is not blocked by baggage, etc.
- Stop your bicycle to operate the switch.
- This unit is not totally waterproof. Please wipe and dry it completely after using in rain. Otherwise, it may cause failure.
- If the light unit or parts become dirty with mud, etc., clean with a soft cloth which is moistened with mild soap. Never apply paint thinner, benzene or alcohol; damage will result.

## 2 HOW TO USE



1. Using a coin to remove the lens from the light as shown in the drawing. (1 - 2)
2. Insert the battery according to the mark stamped on the body, and then fit the lens firmly to the body. (3)

### CAUTION!

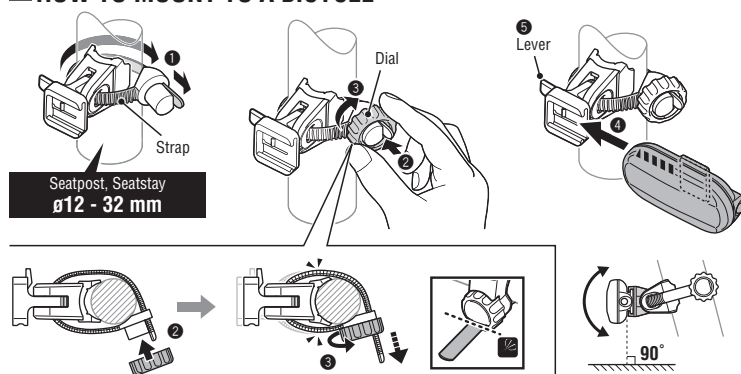
- Be sure to install batteries in the correct direction.
- Install the rubber gasket correctly to maintain waterproof features.
- Remove and store batteries when you will not use the light for a long period of time. Otherwise, batteries may leak liquid, which may result in failure.

Use the switch to turn the power ON or OFF and to change the lighting mode.

- \* The light will turn on in the lighting mode previously selected. (Mode memory function)

Standard operating time	TL-LD135-R	TL-LD155-R
Rapid	Approx. 200 h	Approx. 120 h
Flash	Approx. 150 h	Approx. 90 h
Constant	Approx. 100 h	Approx. 60 h

## 3 HOW TO MOUNT TO A BICYCLE

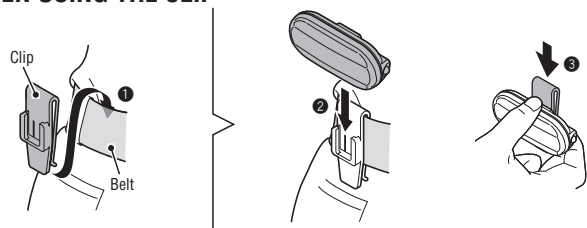


1. Mount the bracket to the seatpost or the seatstay as shown. (1 - 3)
2. Slide the light onto the bracket until it "clicks" into place. (4)
3. To remove the light, press the lever (5) and slide it off.

### CAUTION!

- Be sure to tighten the dial by hand. When you tighten it too hard with a tool, the screw thread may be stripped.
- Check the bracket frequently to be sure it is properly tightened at all times.
- Round off the cut edge of the bracket strap to prevent injury.

## 4 WHEN USING THE CLIP



1. Mount the clip to the belt as shown. (1)
2. Insert the light to the clip until it clicks. (2)
3. To remove, press down the clip from the top while holding the light. (3)

### CAUTION!

Do not mount the clip to the saddlebag. It may come off by vibration of the bicycle.

## LIMITED WARRANTY

### 2-year Warranty: Light unit only

CatEye products are warranted to be free of defects from materials and workmanship for a period of 2 years from original purchase. If the product fails to work during normal use, CatEye will repair or replace the defect at no charge. Service must be performed by CatEye or an authorized retailer. To return the product, pack it carefully and enclose the warranty certificate (proof of purchase) with instruction for repair. Please write or type your name and address clearly on the warranty certificate. Insurance, handling and transportation charges to CatEye shall be borne by person desiring service. For UK and REPUBLIC OF IRELAND consumers, please return to the place of purchase. This does not affect your statutory rights.

Please register your CatEye product on the website.

<http://www.cateye.com/en/support/regist/>

### CATEYE CO., LTD.

2-8-25, Kuwazu, Higashi Sumiyoshi-ku, Osaka  
546-0041 Japan  
Attn: CATEYE Customer Service Section  
Phone : (06)6719-6863  
Fax : (06)6719-6033  
E-mail : support@cateye.co.jp  
URL : <http://www.cateye.com>

### [For US Customers]

**CATEYE AMERICA, INC.**  
2825 Wilderness Place Suite 1200, Boulder  
CO80301-5494 USA  
Phone : 303.443.4595  
Toll Free: 800.5CATEYE  
Fax : 303.473.0006  
E-mail : service@cateye.com

## SPECIFICATIONS

Battery	AAA dry-cell battery x 2		
Operating time (When using alkaline batteries)	TL-LD135-R Rapid : Approx. 200 hours, Flash : Approx. 150 hours, Constant : Approx. 100 hours TL-LD155-R Rapid : Approx. 120 hours, Flash : Approx. 90 hours, Constant : Approx. 60 hours		
Temperature range	14°F - 104°F (-10°C - 40°C)		
Dimensions/weight	TL-LD135-R 1-27/64" x 2-61/64" x 55/64" (36 x 75 x 21.9 mm) / 1.47 oz (41.6 g) (Including batteries) TL-LD155-R 1-27/64" x 2-61/64" x 55/64" (36 x 75 x 21.9 mm) / 1.47 oz (41.8 g) (Including batteries)		

\* The specifications and design are subject to change without notice.

## SPARE PARTS

**5342280**  
FlexTight™ bracket  
(SP-11)



**5440900N**  
Clip (C-1N)



## OPTION PARTS

**5342410**  
FlexTight™ bracket  
(SP-12-R)



**5445620**  
Rear rack bracket



**5446510**  
RM-1 bracket

